


Gesamtauswertung Probe 1

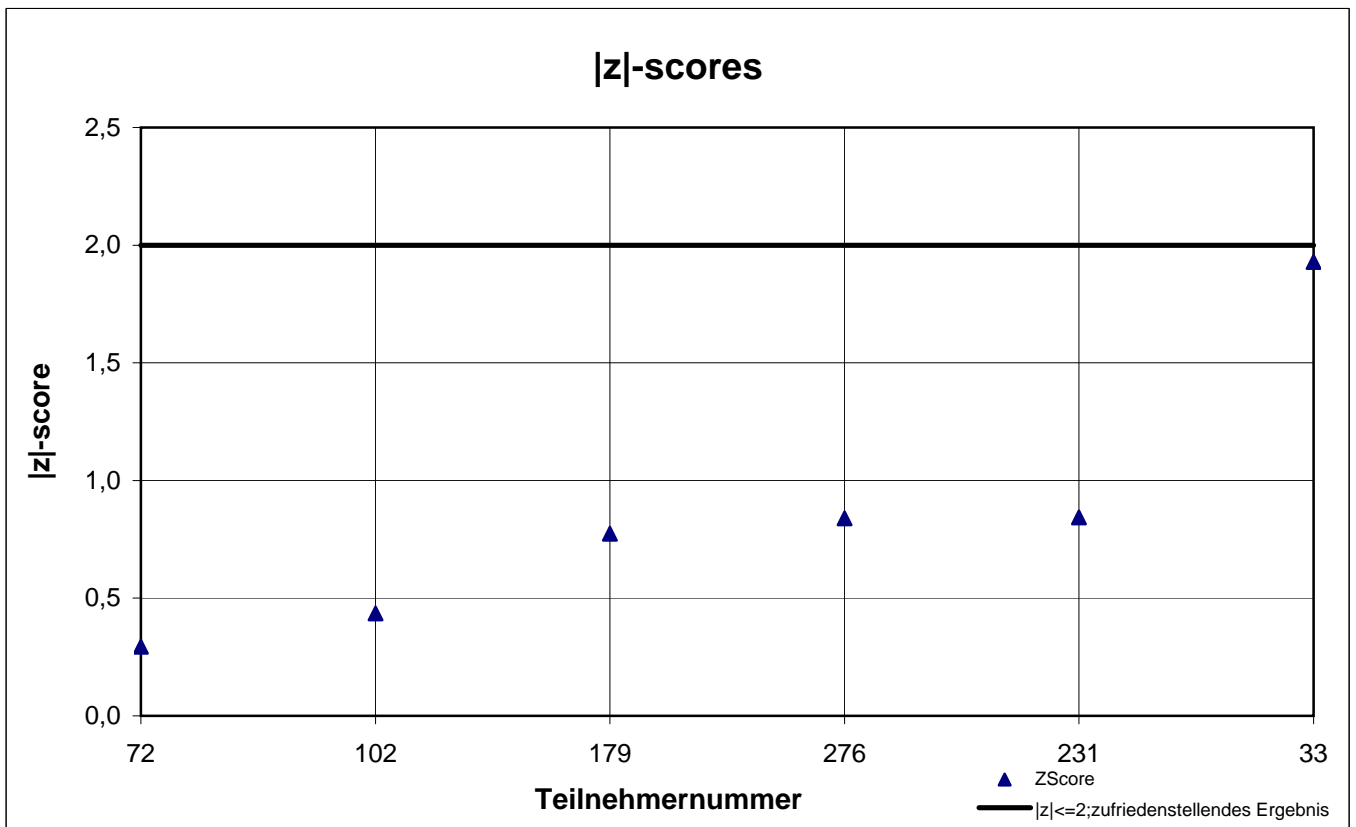
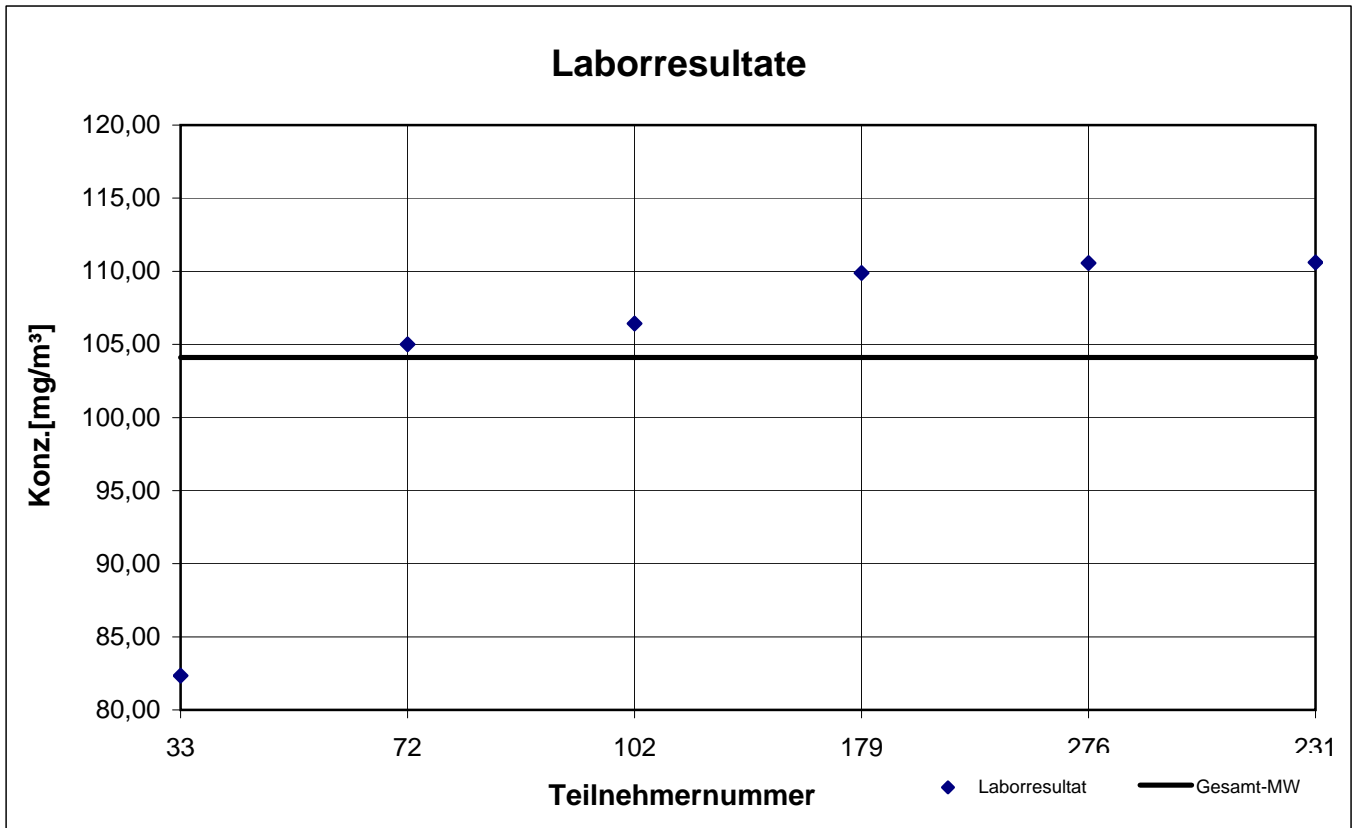
Teilnehmer- nummer	2,6-Dimethyl-4- heptanon		4-Methyl-2-pentanon		Cyclohexanon		Cyclopentanon	
	Labor- resultat [mg/m ³]	z - score	Labor- resultat [mg/m ³]	z - score	Labor- resultat [mg/m ³]	z - score	Labor- resultat [mg/m ³]	z - score
33	82,3	1,9	78,60	0,9	69,10	6,7	135,0	1,4
72	105,0	0,3	72,30	0,1	39,50	0,4	116,0	0,2
102	106,4	0,4	74,07	0,3	42,53	0,3	120,7	0,2
179	109,9	0,8	74,95	0,4	17,57	5,7	51,9	5,6
231	110,6	0,8	79,65	1,1	42,37	0,3	124,7	0,5
276	110,6	0,8	78,83	1,0	36,30	1,2	100,0	1,6

Die mit  gekennzeichneten Felder sind Ausreißer!

	2,6-Dimethyl- 4-heptanon	4-Methyl-2- pentanon	Cyclo- hexanon	Cyclo- pentanon
Gesamtmittelwert c_k [mg/m ³]	104,1	76,40	40,18	119,3
Standardabweichung S_k [mg/m ³]	10,932	3,023	2,936	12,847
rel. Standardabweichung [%]	10,50	3,96	7,31	10,77
Sollwert (Belegungskonzentration) [mg/m ³]		71,90	41,30	118,8

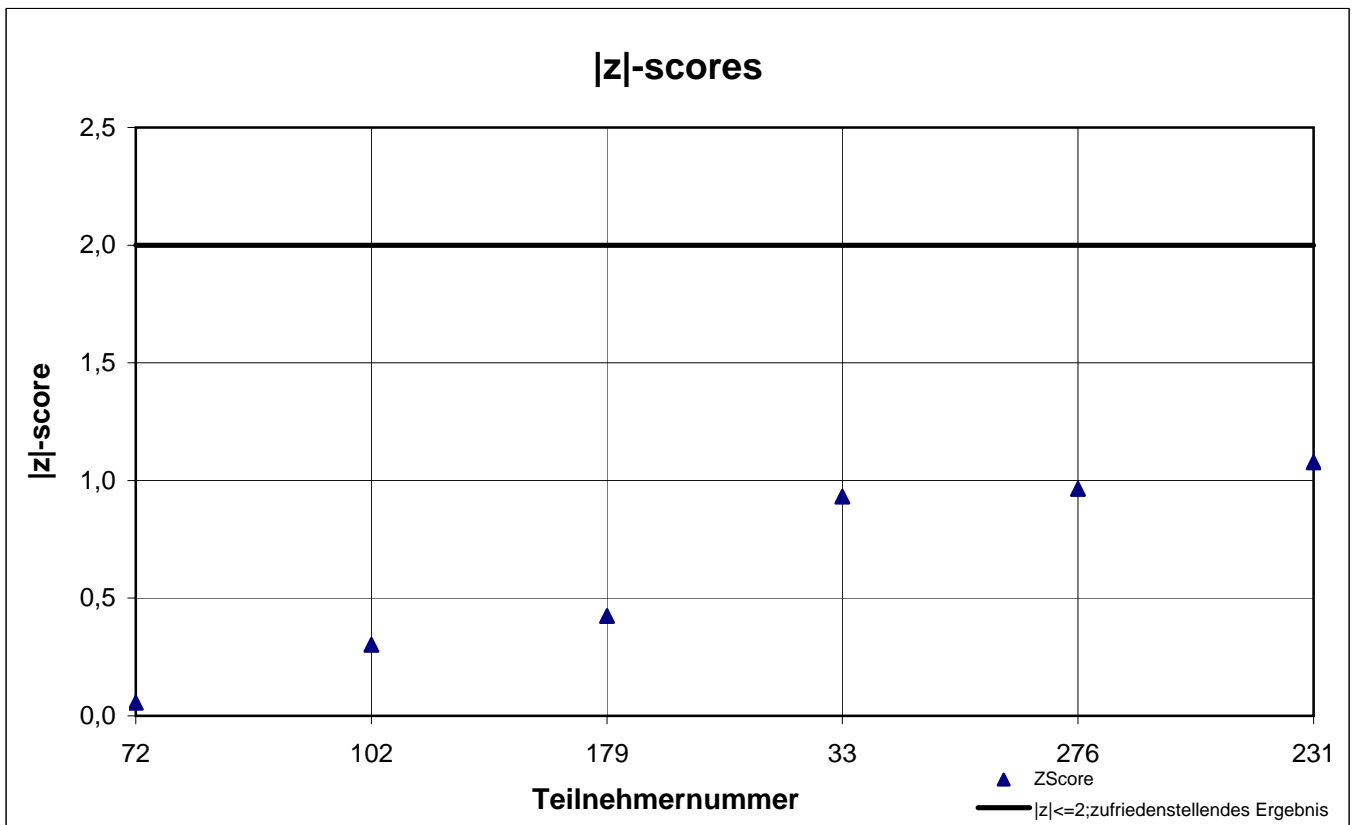
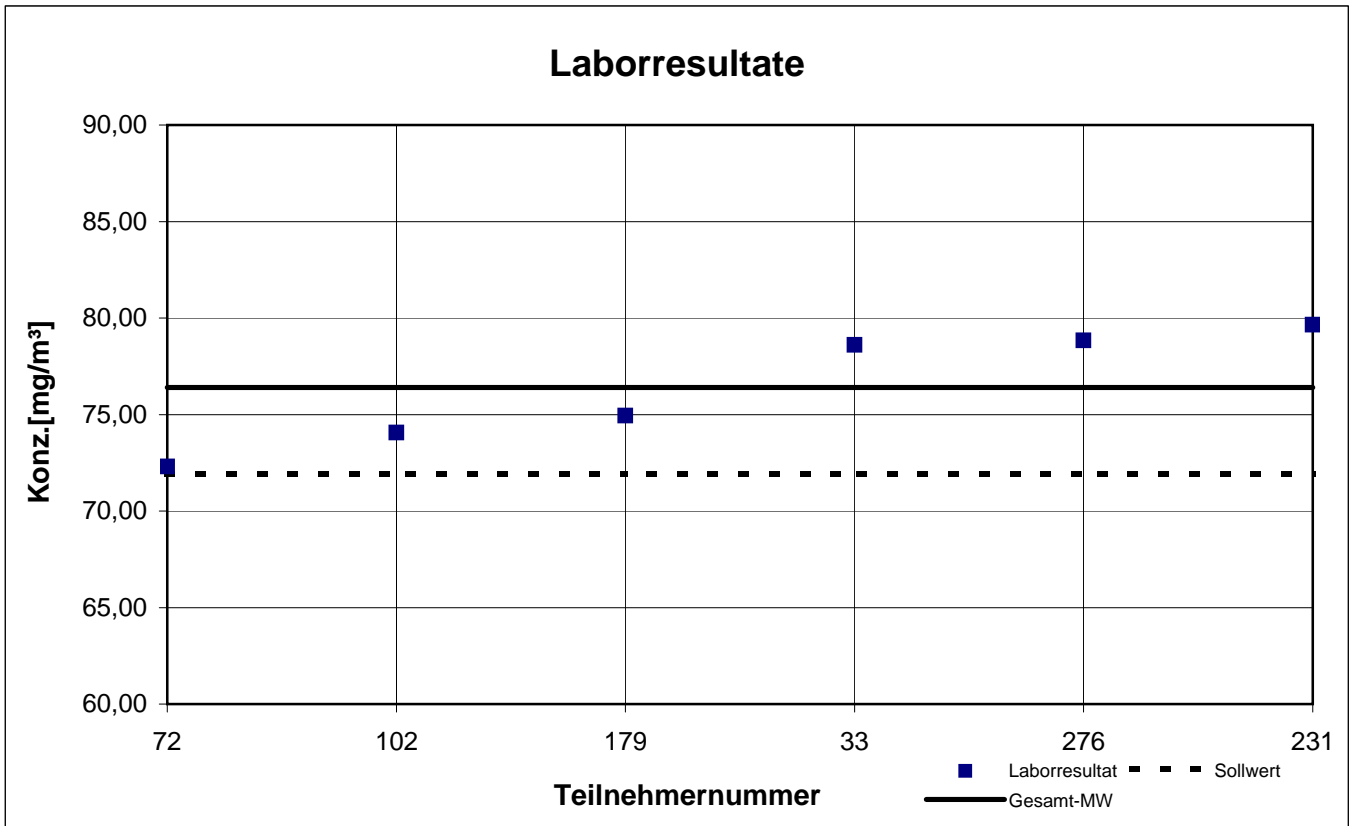
Probe 1

2,6-Dimethyl-4-heptanon



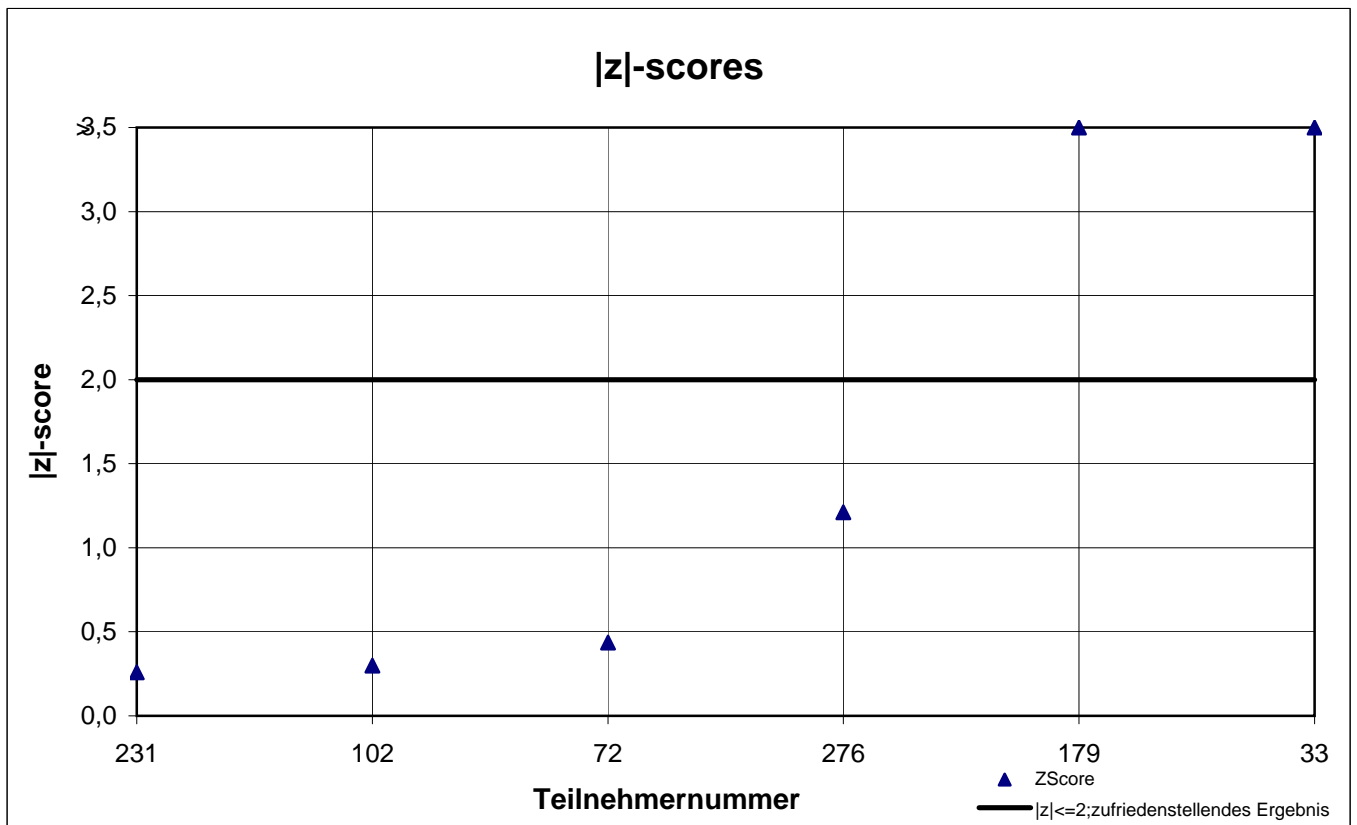
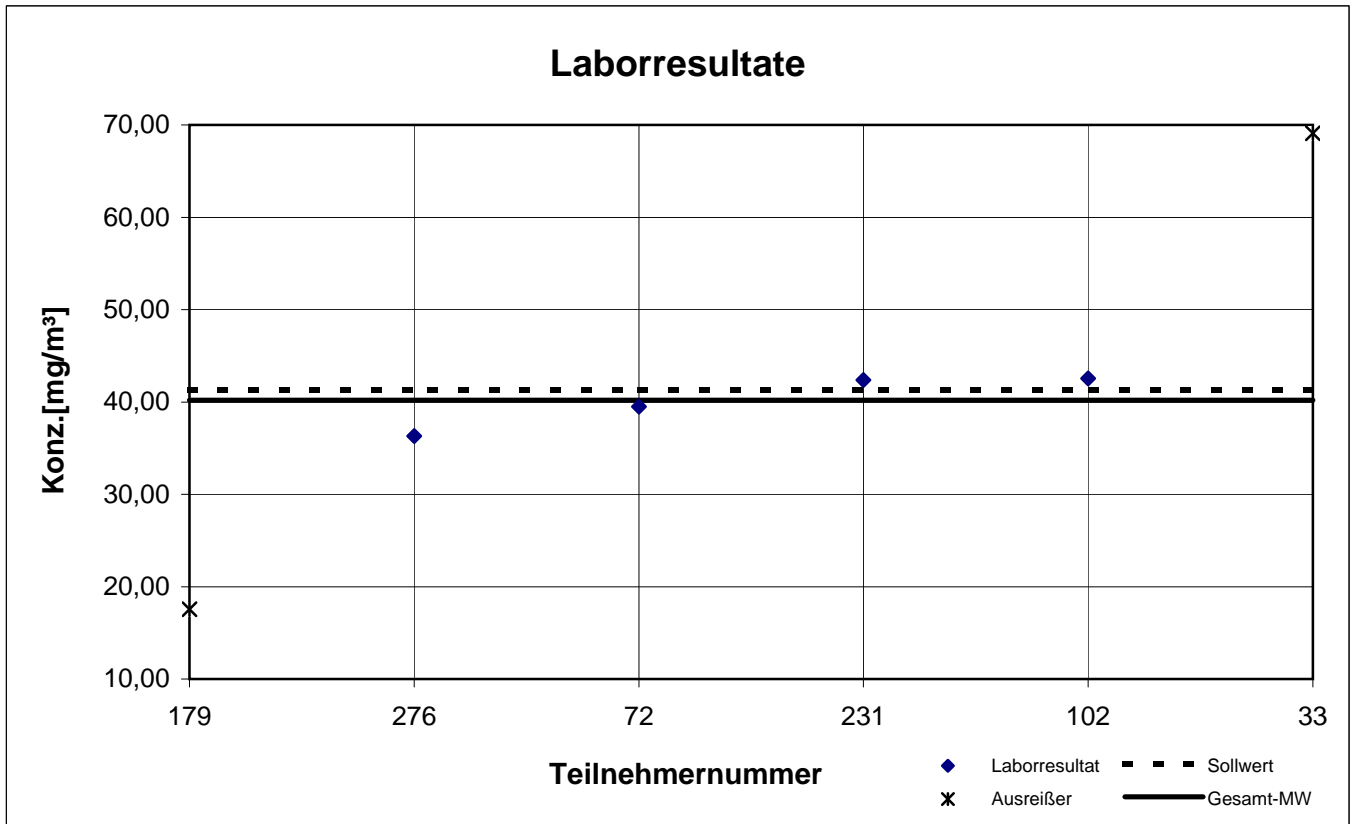
Probe 1

4-Methyl-2-pentanon



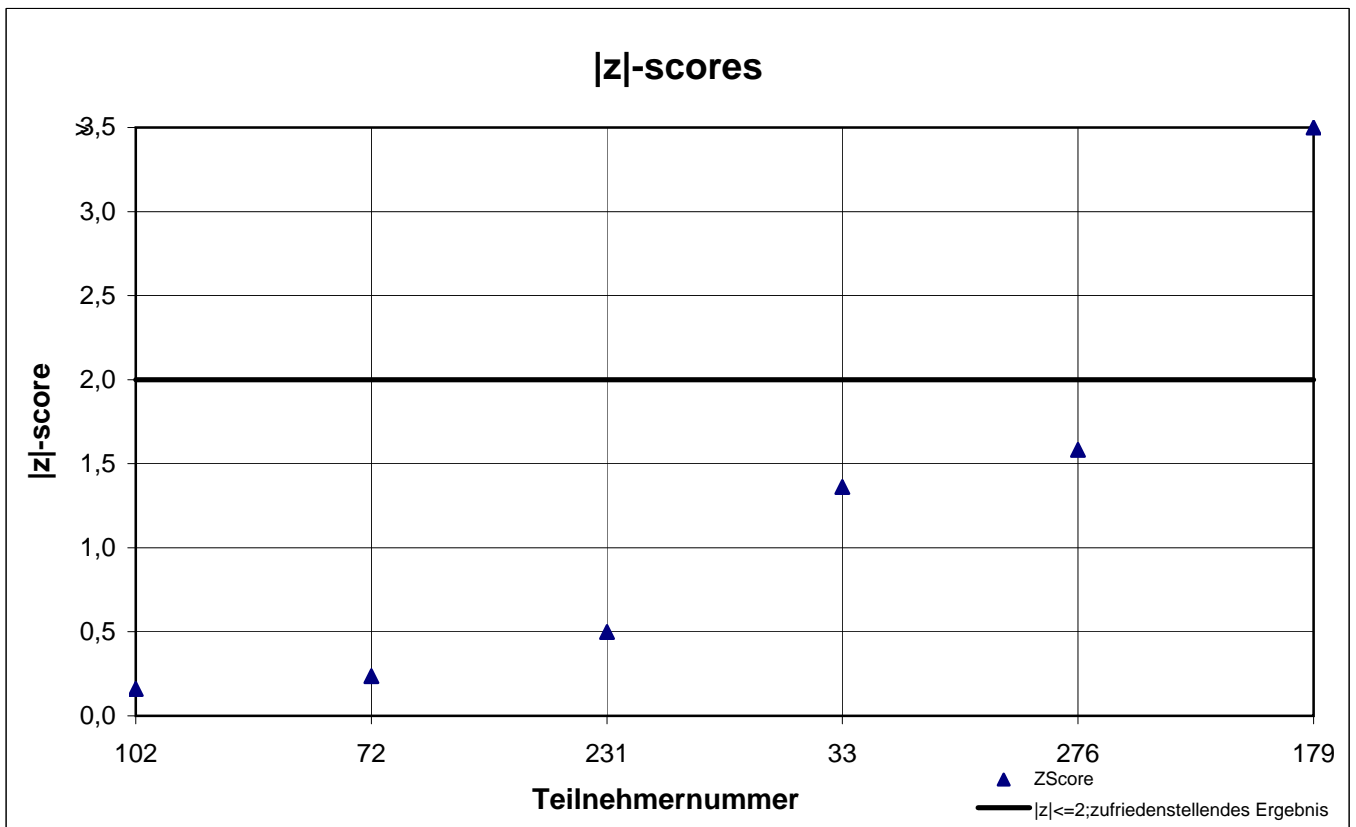
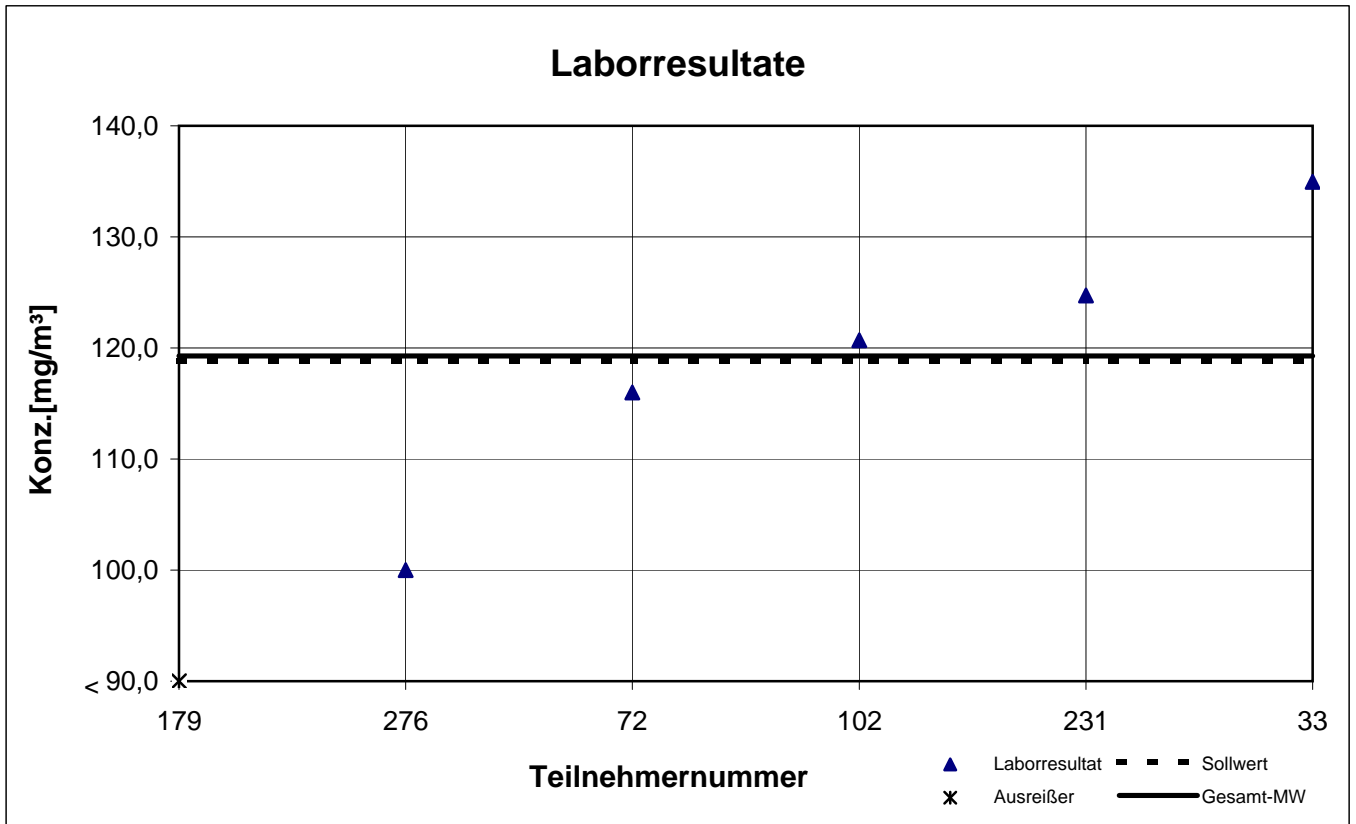
Probe 1

Cyclohexanon



Probe 1

Cyclopentanon



Gesamtauswertung Probe 2

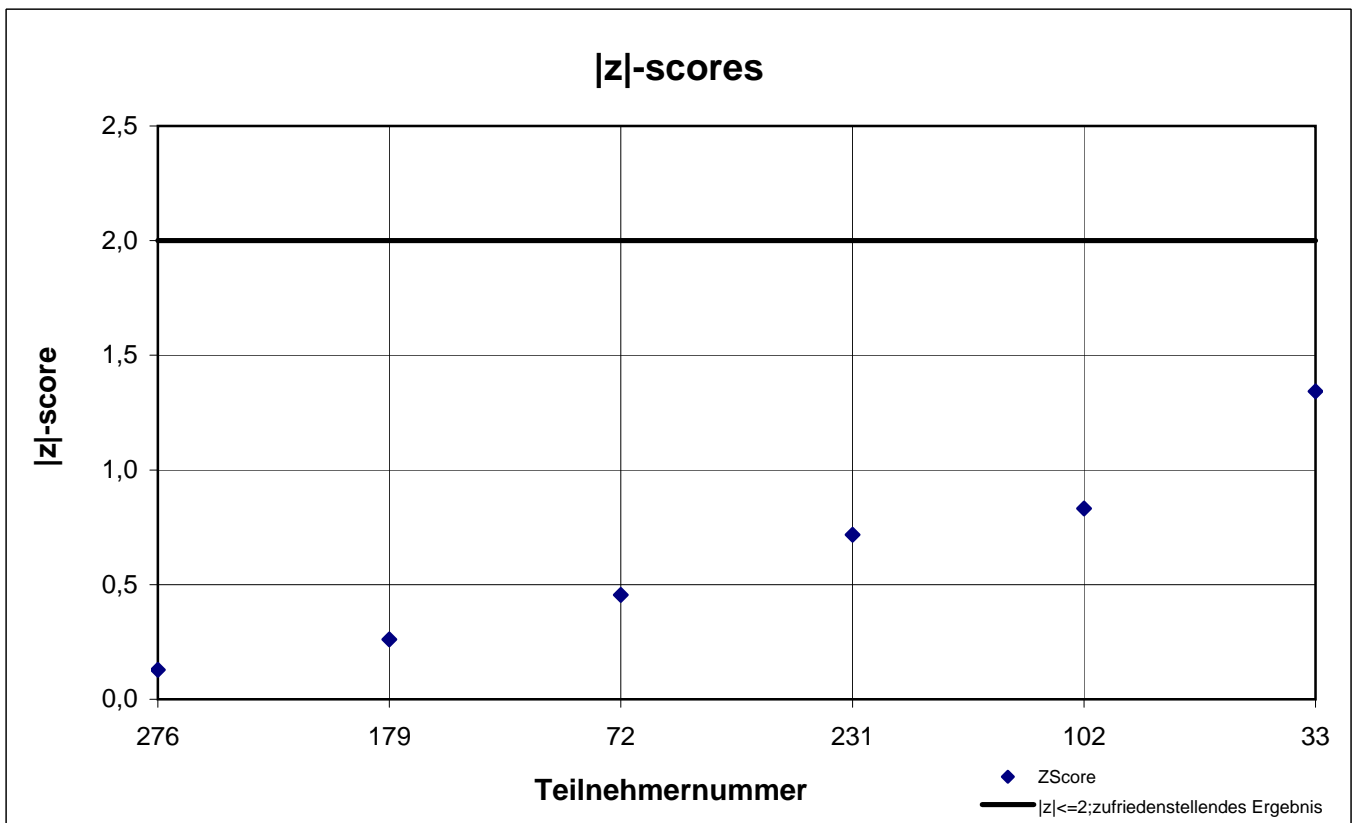
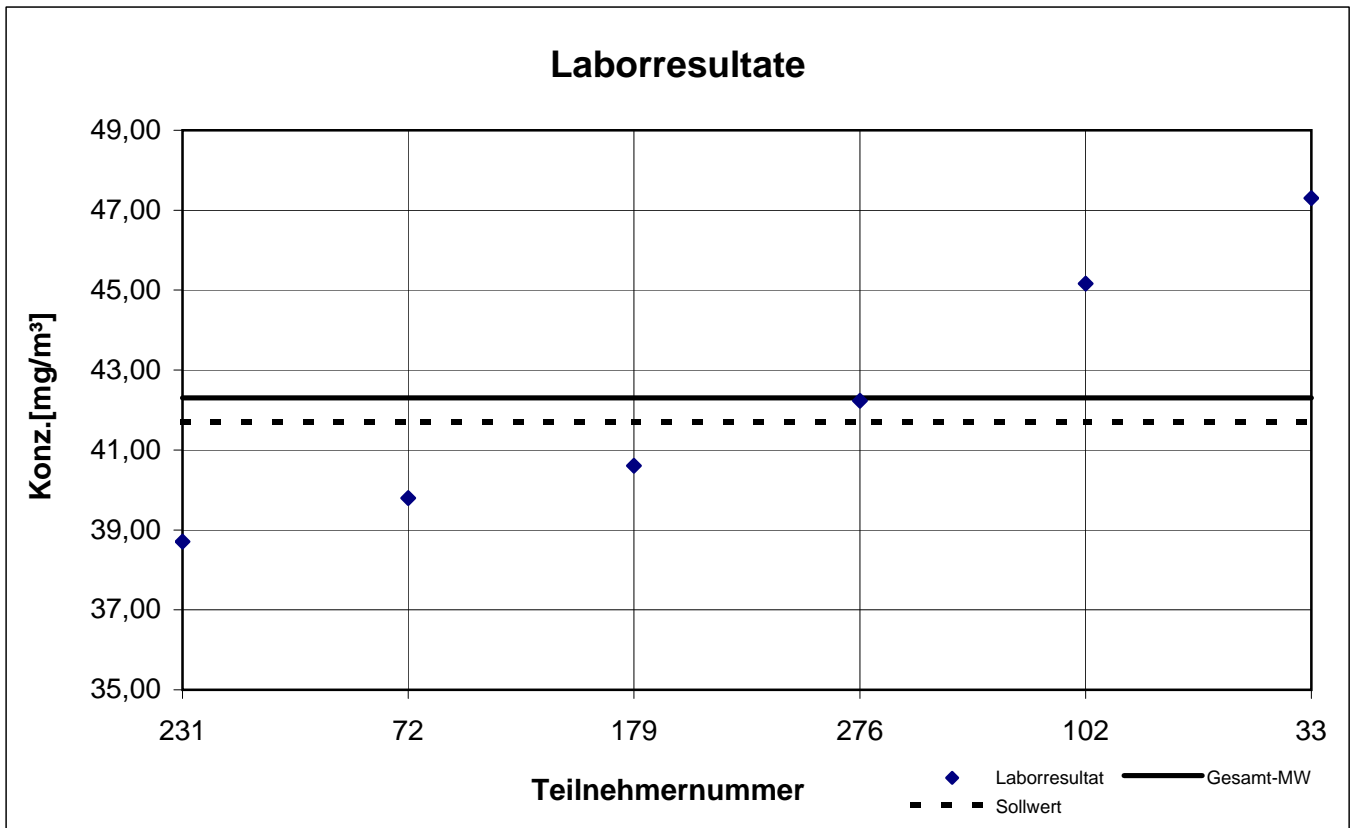
Teilnehmer- nummer	1-Butanol		Ethylbenzol		n-Butylacetat		n-Heptan		p-Xylol		Toluol	
	Labor- resultat [mg/m ³]	z - score	Labor- resultat [mg/m ³]	z - score	Labor- resultat [mg/m ³]	z - score	Labor- resultat [mg/m ³]	z - score	Labor- resultat [mg/m ³]	z - score	Labor- resultat [mg/m ³]	z - score
33	47,30	1,3	78,77	0,3	92,87	0,9	85,27	0,5	106,5	0,1	50,17	0,6
72	39,80	0,5	80,60	0,5	83,90	0,1	87,80	0,8	109,0	0,3	49,10	0,4
102	45,17	0,8	68,23	1,1	84,77	0,0	114,1	4,0	60,0	4,3	40,53	1,4
179	40,61	0,3	91,19	1,9	101,5	1,9	94,07	1,6	123,5	1,7	57,59	2,2
231	38,71	0,7	84,66	1,0	95,06	1,2	89,48	1,0	113,9	0,8	51,28	0,9
276	42,23	0,1	75,73	0,1	86,40	0,2	78,60	0,3	104,7	0,1	48,07	0,2

Die mit gekennzeichneten Felder sind Ausreißer!

	1-Butanol	Ethyl- benzol	n-Butyl- acetat	n-Heptan	p-Xylol	Toluol
Gesamtmittelwert c_k [mg/m ³]	42,30	79,86	90,75	87,04	111,5	49,46
Standardabweichung S_k [mg/m ³]	3,324	7,814	6,929	5,708	7,531	5,508
rel. Standardabweichung [%]	7,86	9,78	7,64	6,56	6,75	11,14
Sollwert (Belegungskonzentration) [mg/m ³]	41,70	76,70	85,10	81,40	105,6	47,20

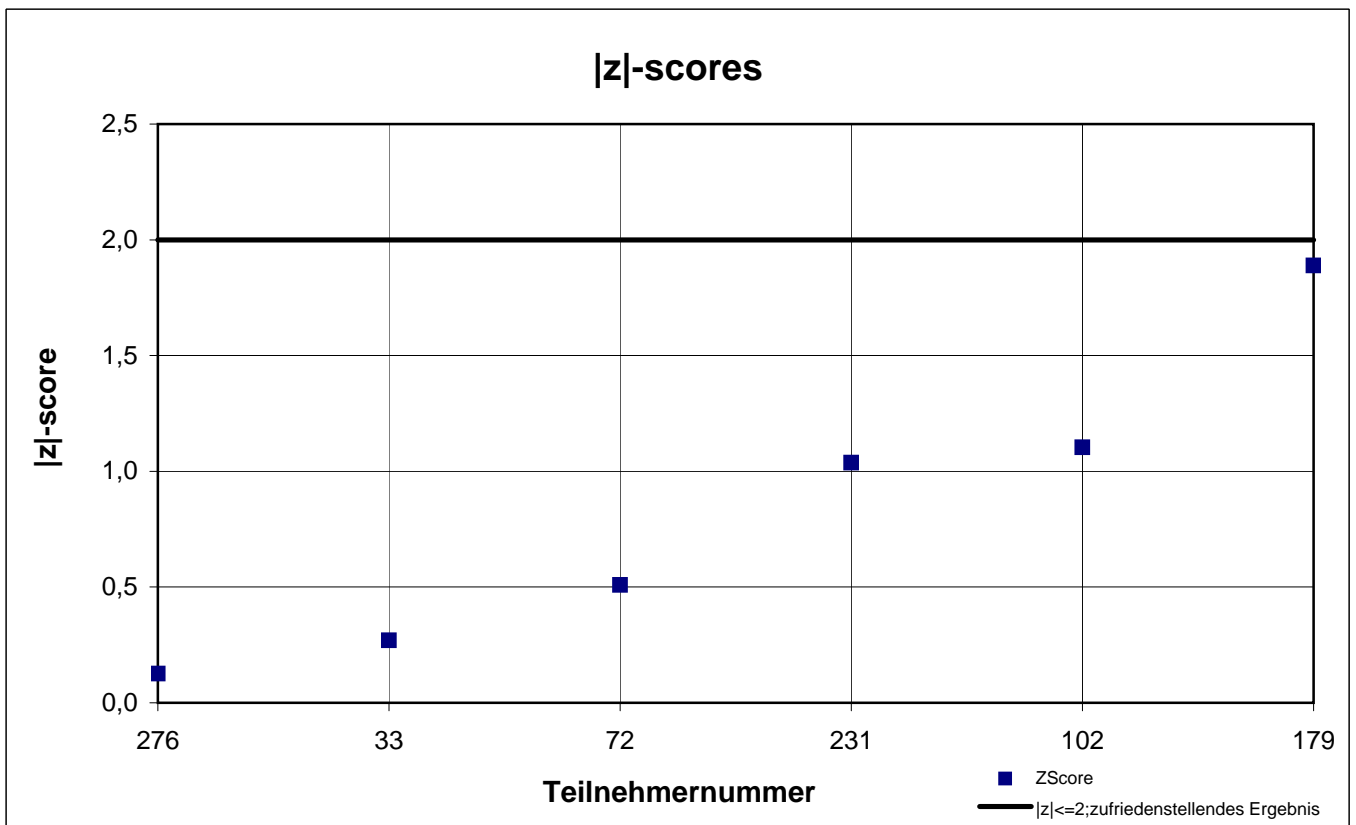
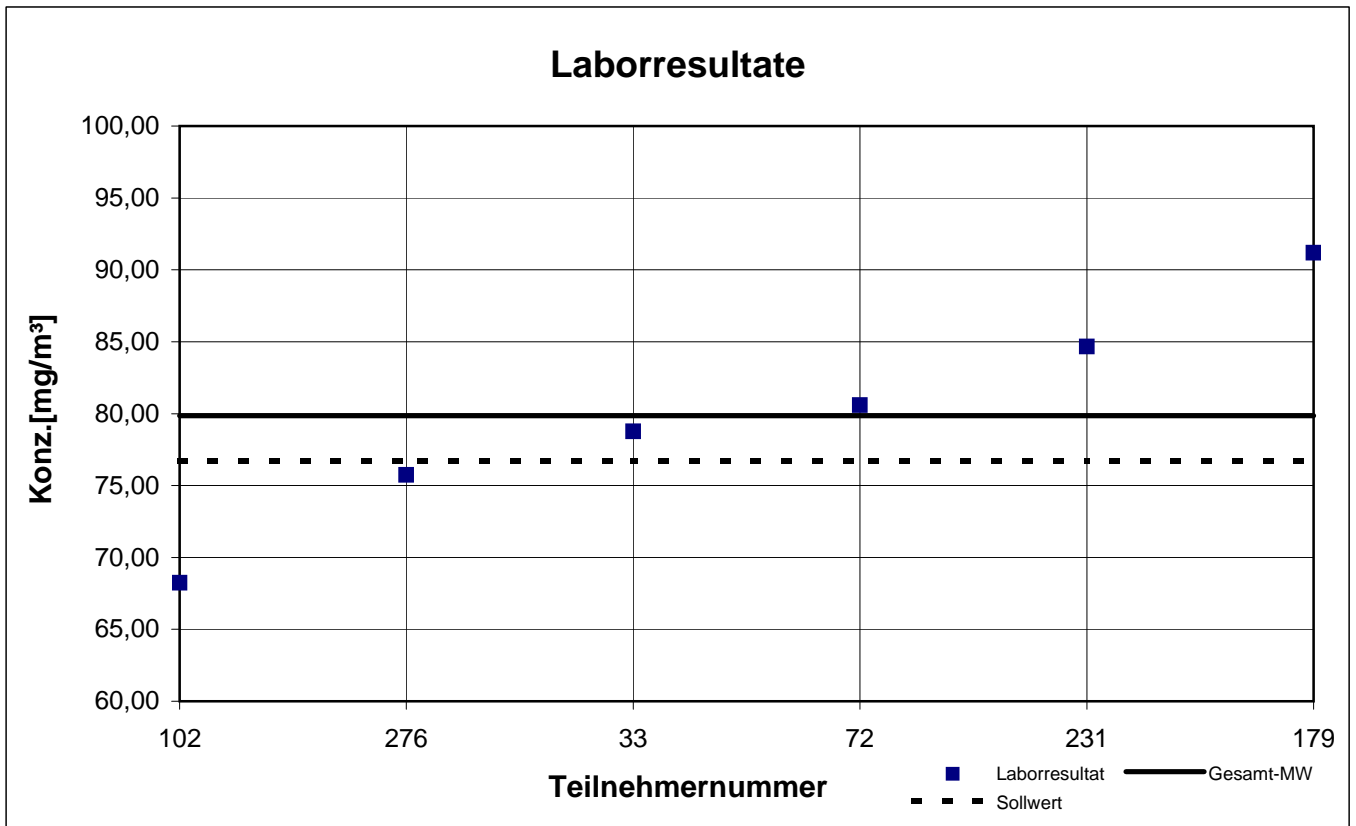
Probe 2

1-Butanol



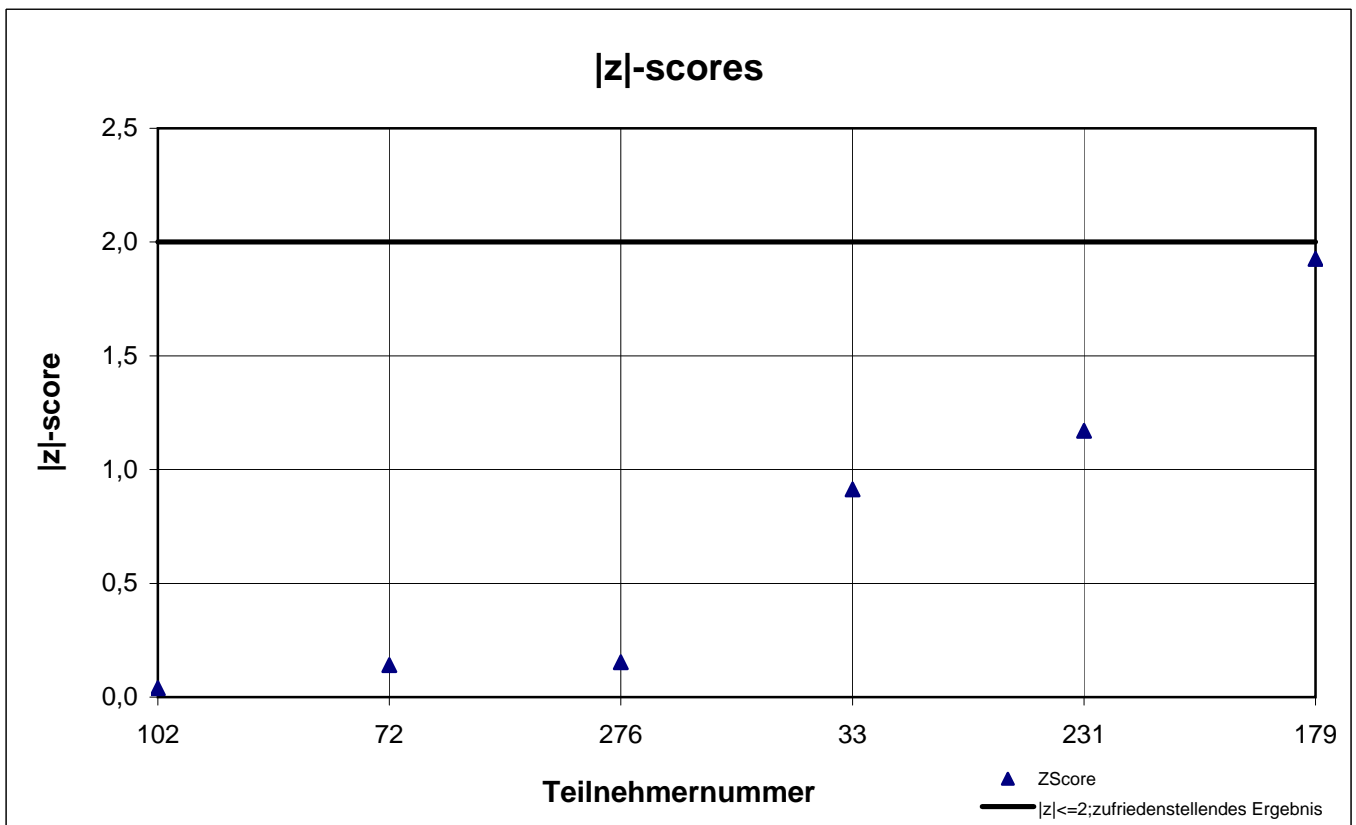
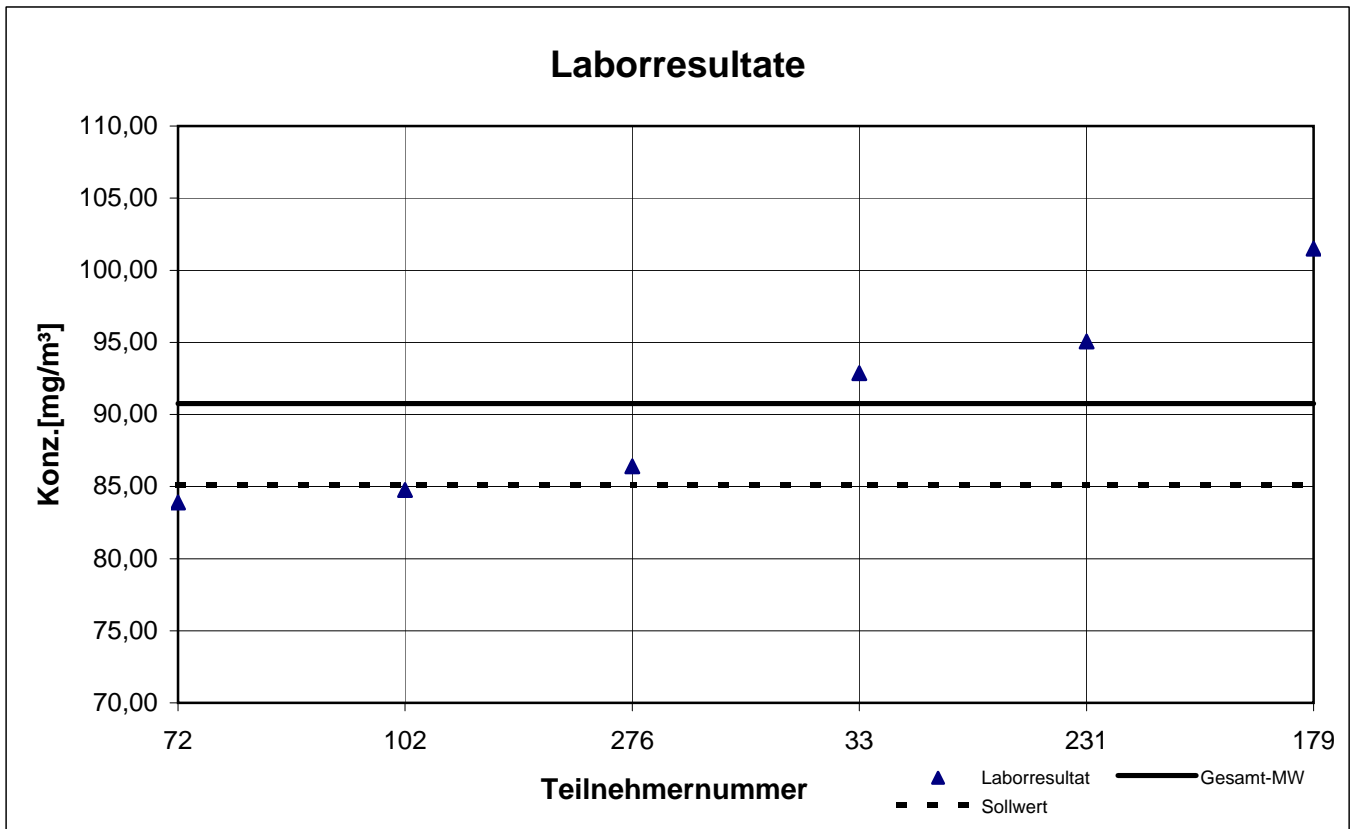
Probe 2

Ethylbenzol



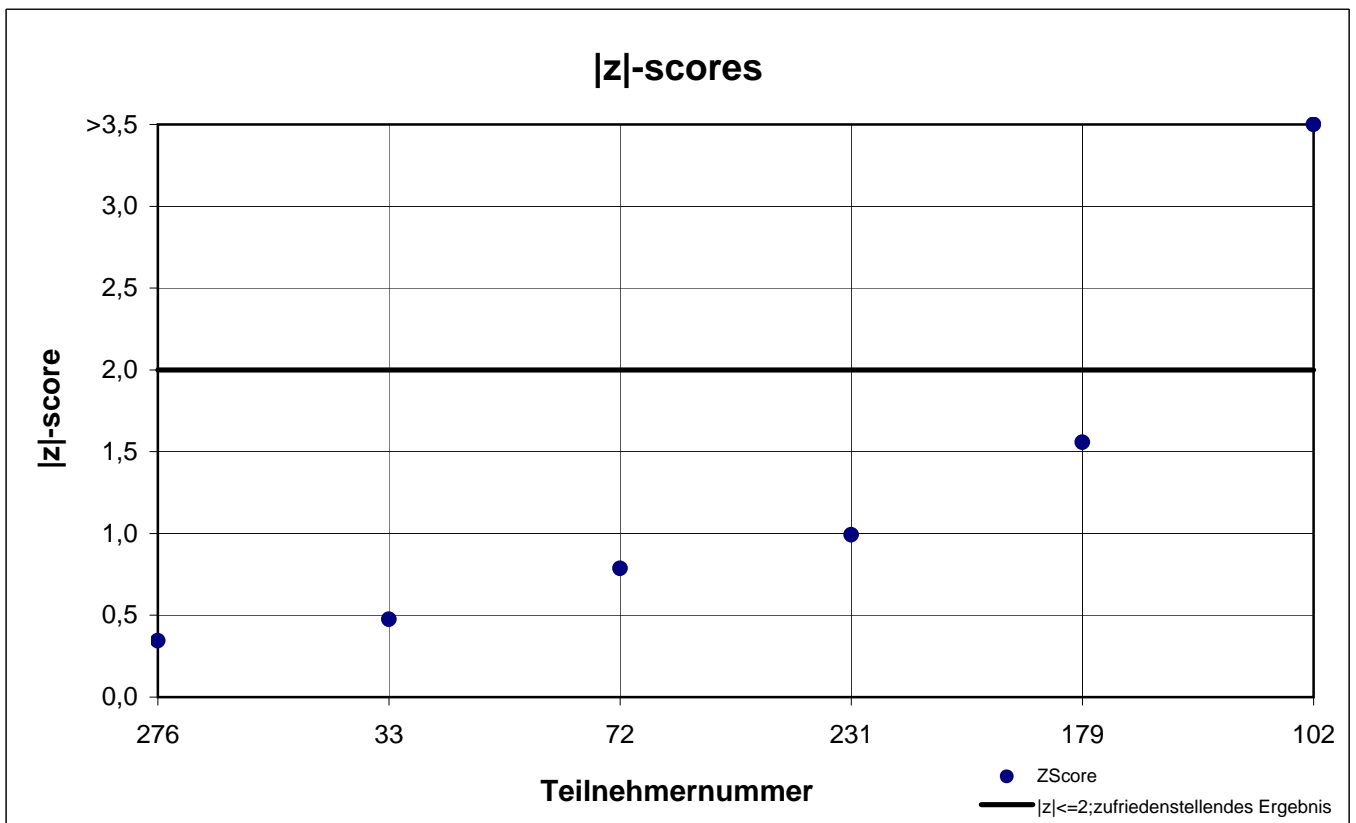
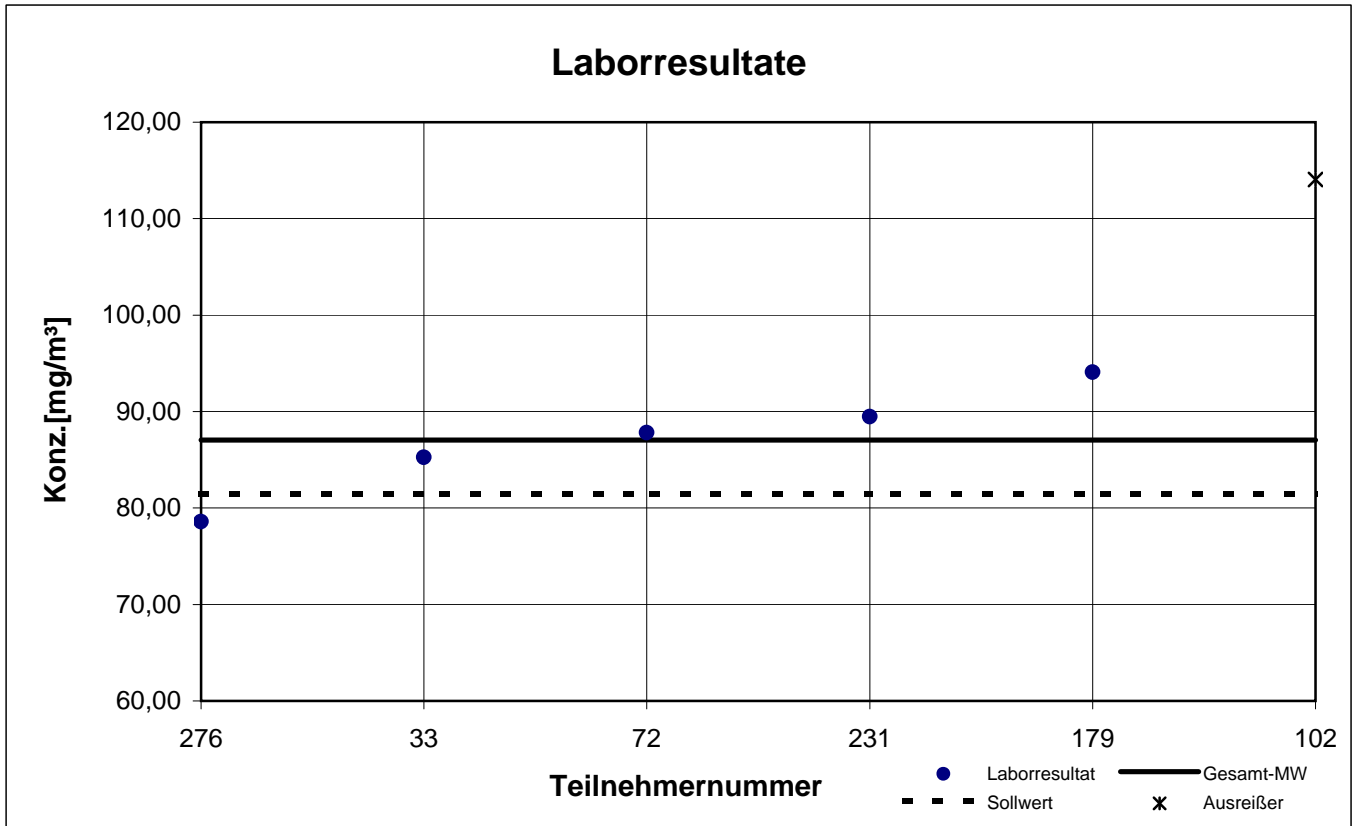
Probe 2

n-Butylacetat



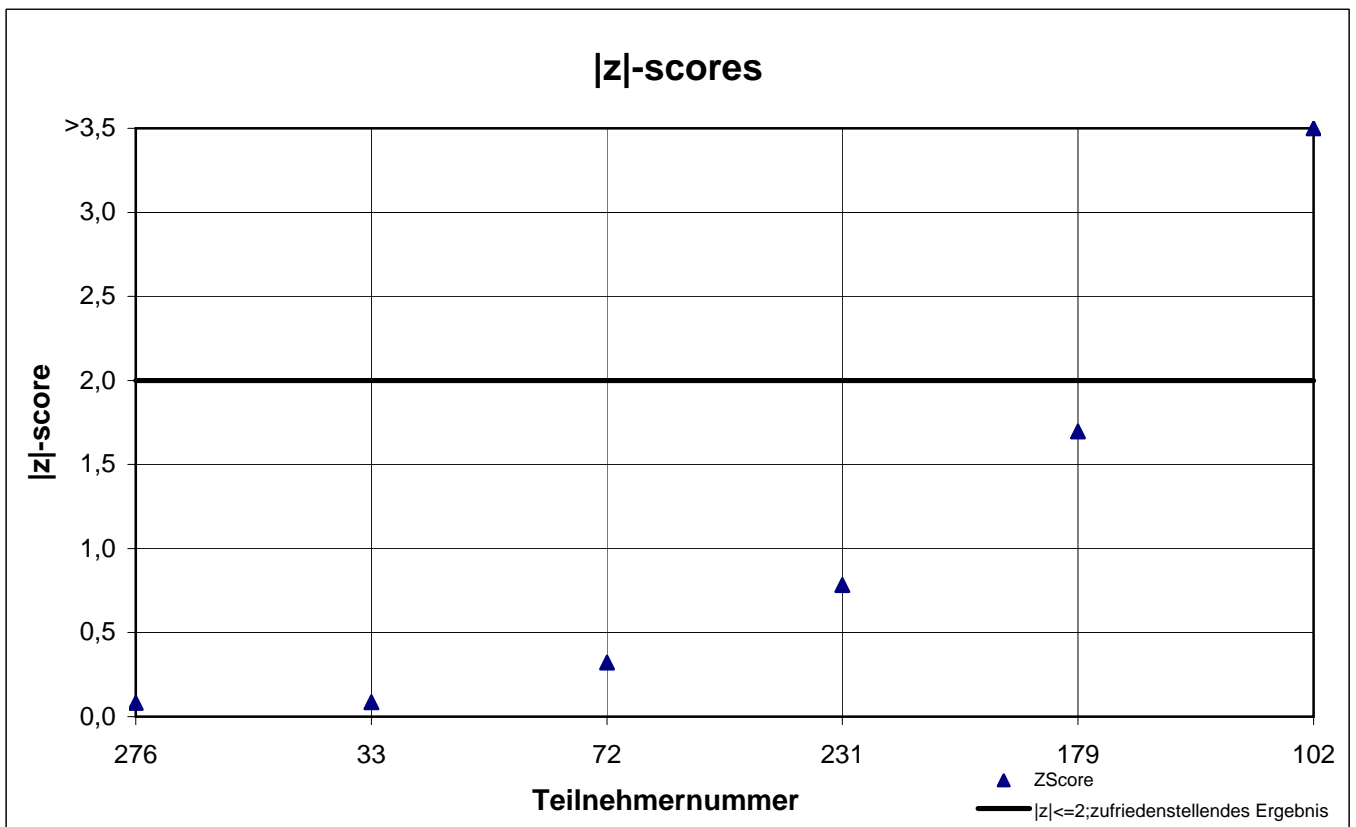
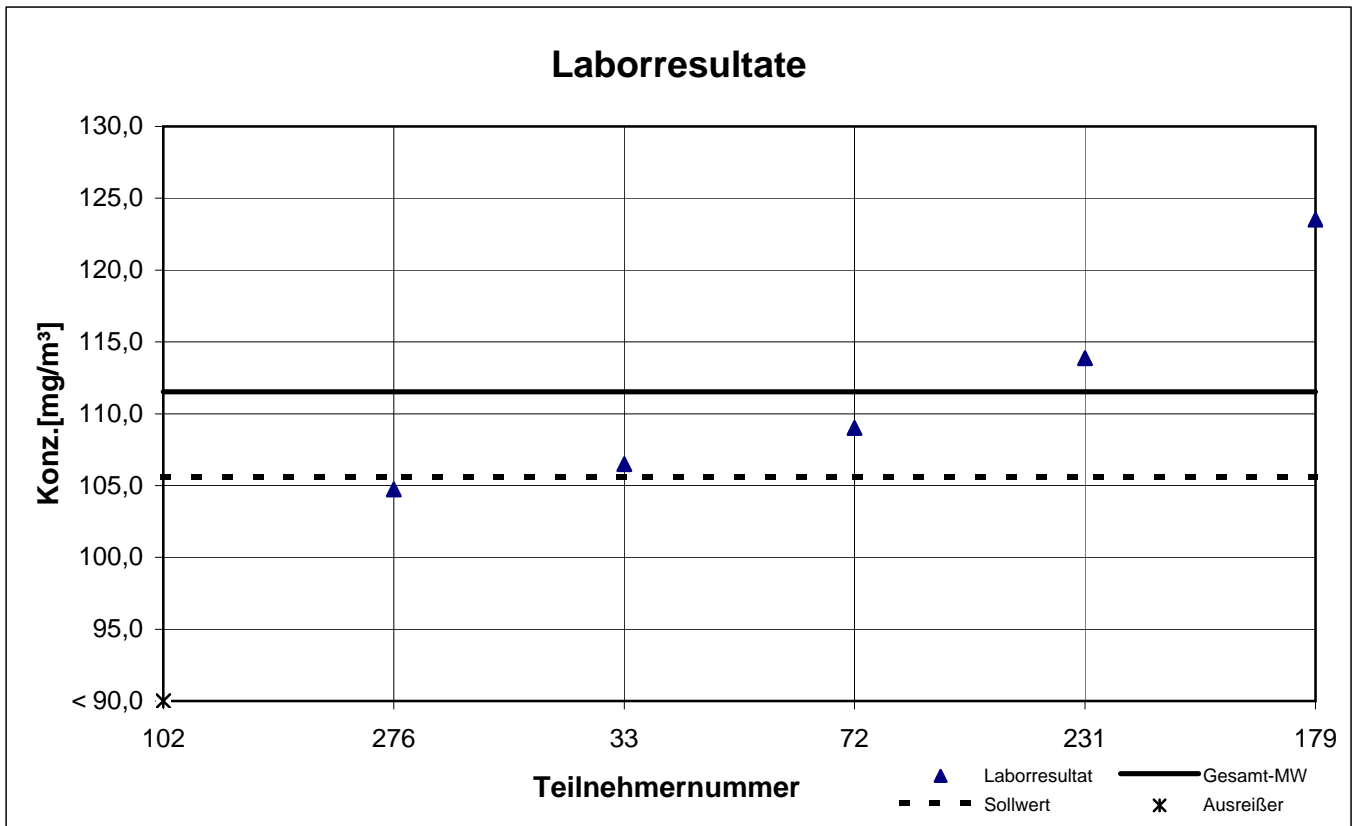
Probe 2

n-Heptan



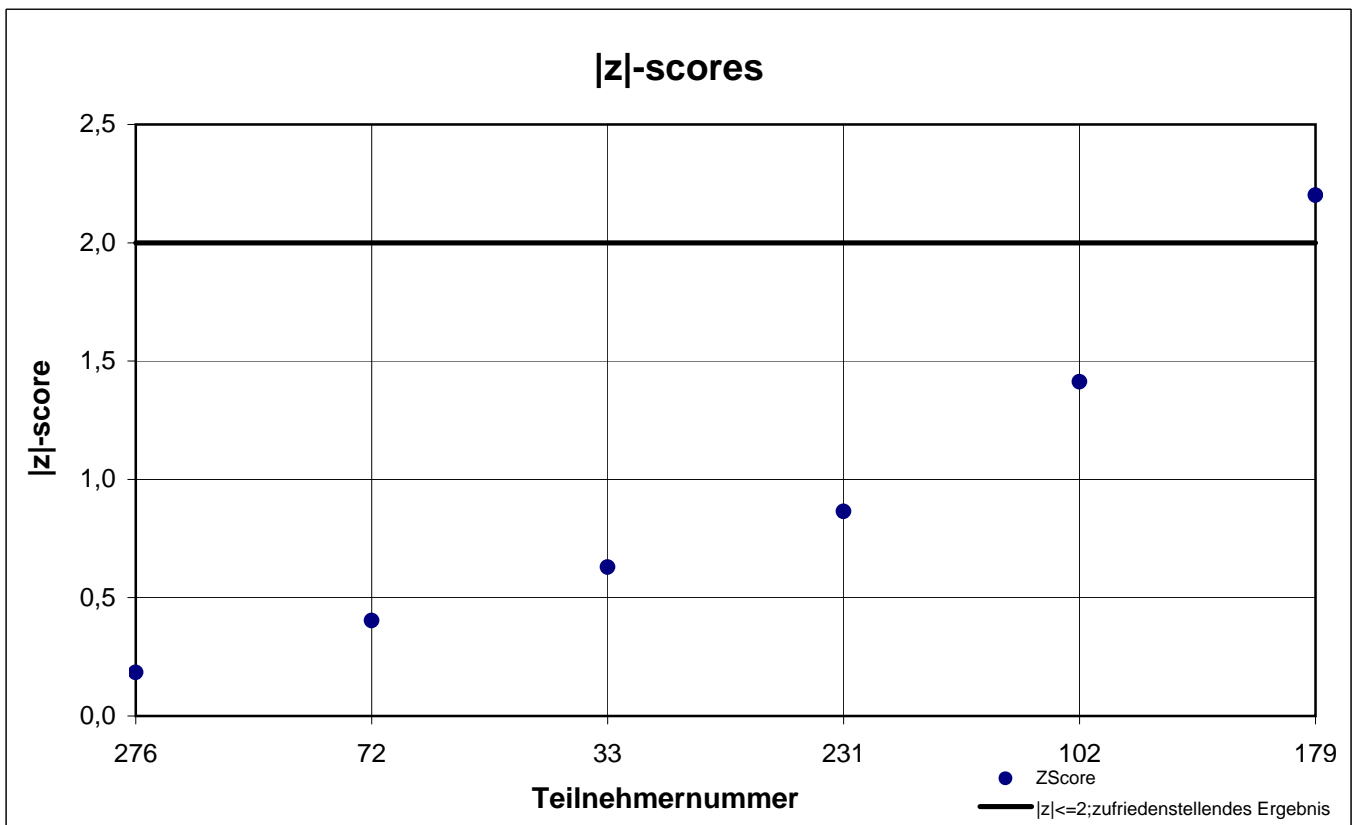
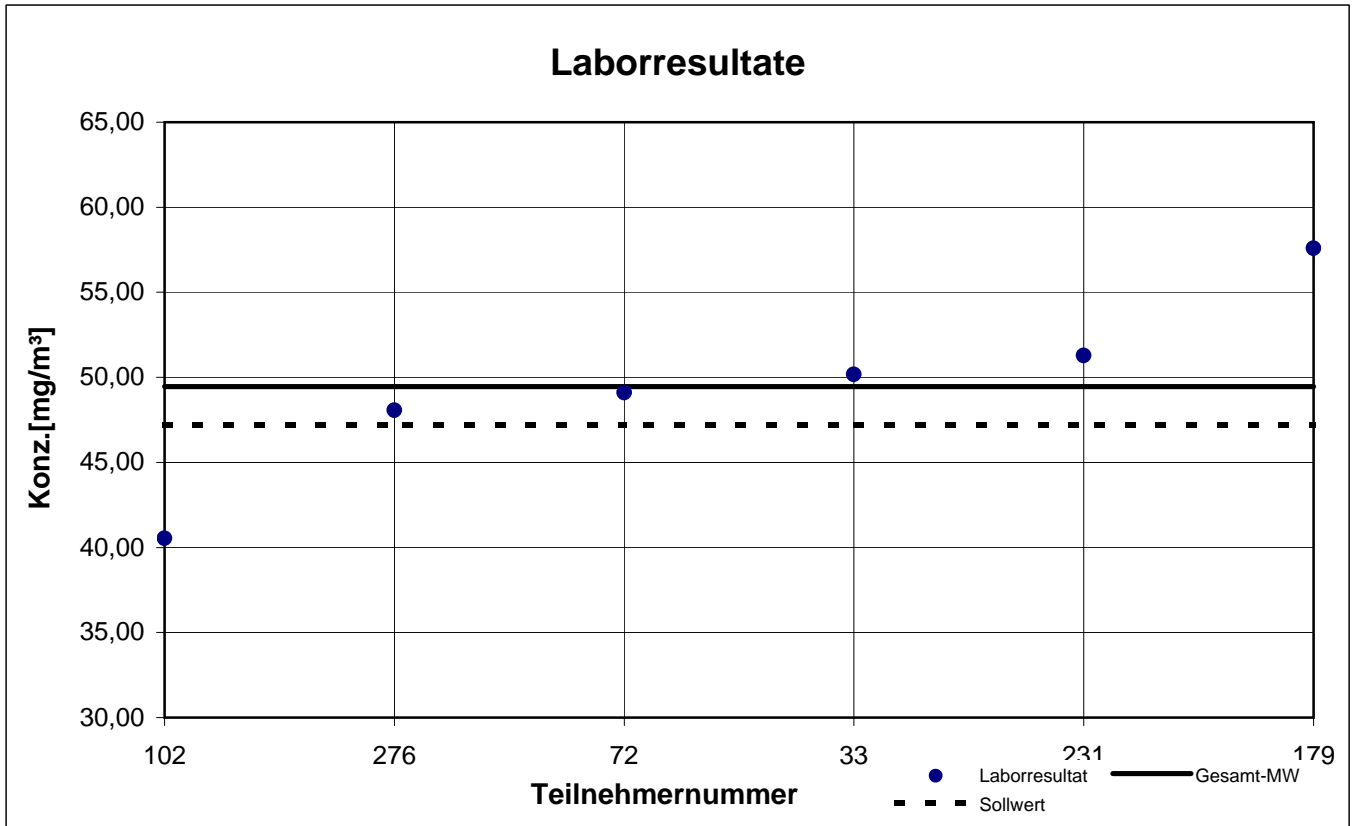
Probe 2

p-Xylol



Probe 2

Toluol



Gesamtauswertung Probe 3

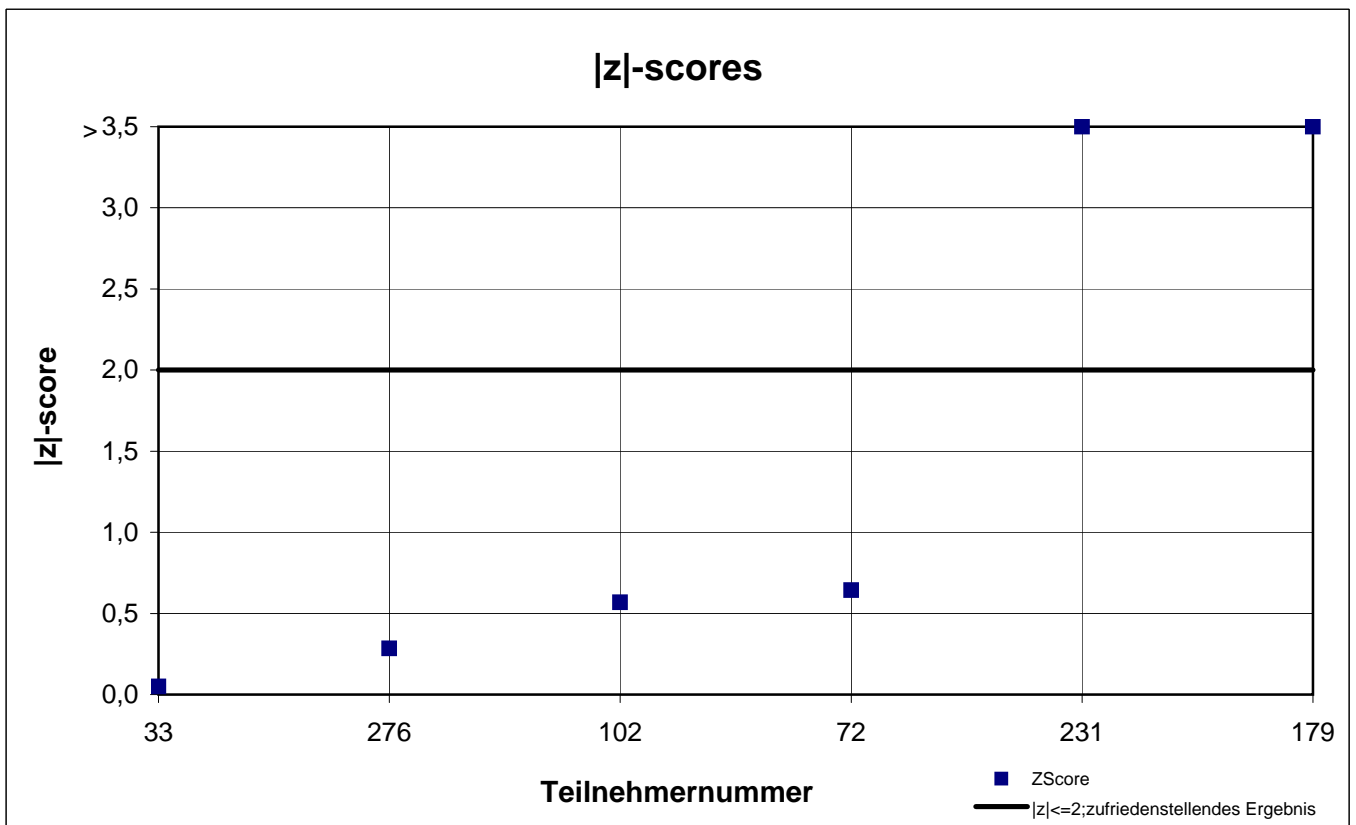
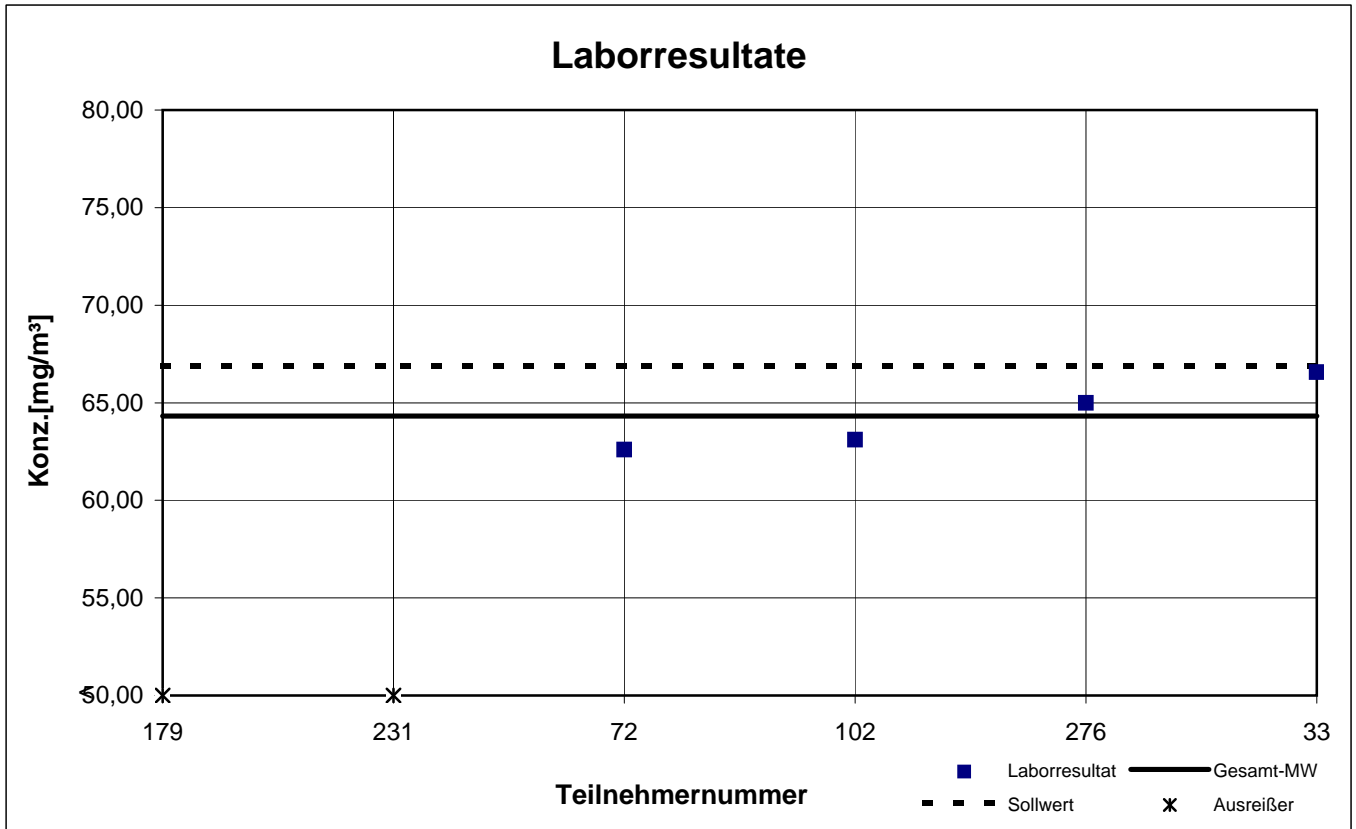
Teilnehmer- nummer	1-Methoxy-2-propanol		2-Butanol		2-Butoxyethanol		i-Butanol	
	Labor- resultat [mg/m ³]	z - score	Labor- resultat [mg/m ³]	z - score	Labor- resultat [mg/m ³]	z - score	Labor- resultat [mg/m ³]	z - score
33	66,57	0,0	90,47	0,2	39,43	0,0	77,67	0,3
72	62,60	0,6	83,30	0,6	39,50	0,0	70,50	0,6
102	63,10	0,6	86,90	0,2	38,57	0,2	74,70	0,1
179	25,68	6,2	78,34	1,2	16,83	5,7	63,64	1,5
231	39,67	4,1	80,51	0,9	27,72	3,0	64,82	1,4
276	65,00	0,3	87,43	0,1	45,40	1,5	73,23	0,3

Die mit gekennzeichneten Felder sind Ausreißer!

	1-Methoxy-2- propanol	2-Butanol	2-Butoxy- ethanol	i-Butanol
Gesamtmittelwert c_k [mg/m ³]	64,32	84,49	38,12	70,76
Standardabweichung S_k [mg/m ³]	1,822	4,589	6,424	5,574
rel. Standardabweichung [%]	2,83	5,43	16,85	7,88
Sollwert (Belegungskonzentration) [mg/m ³]	66,90	88,60	39,40	75,30

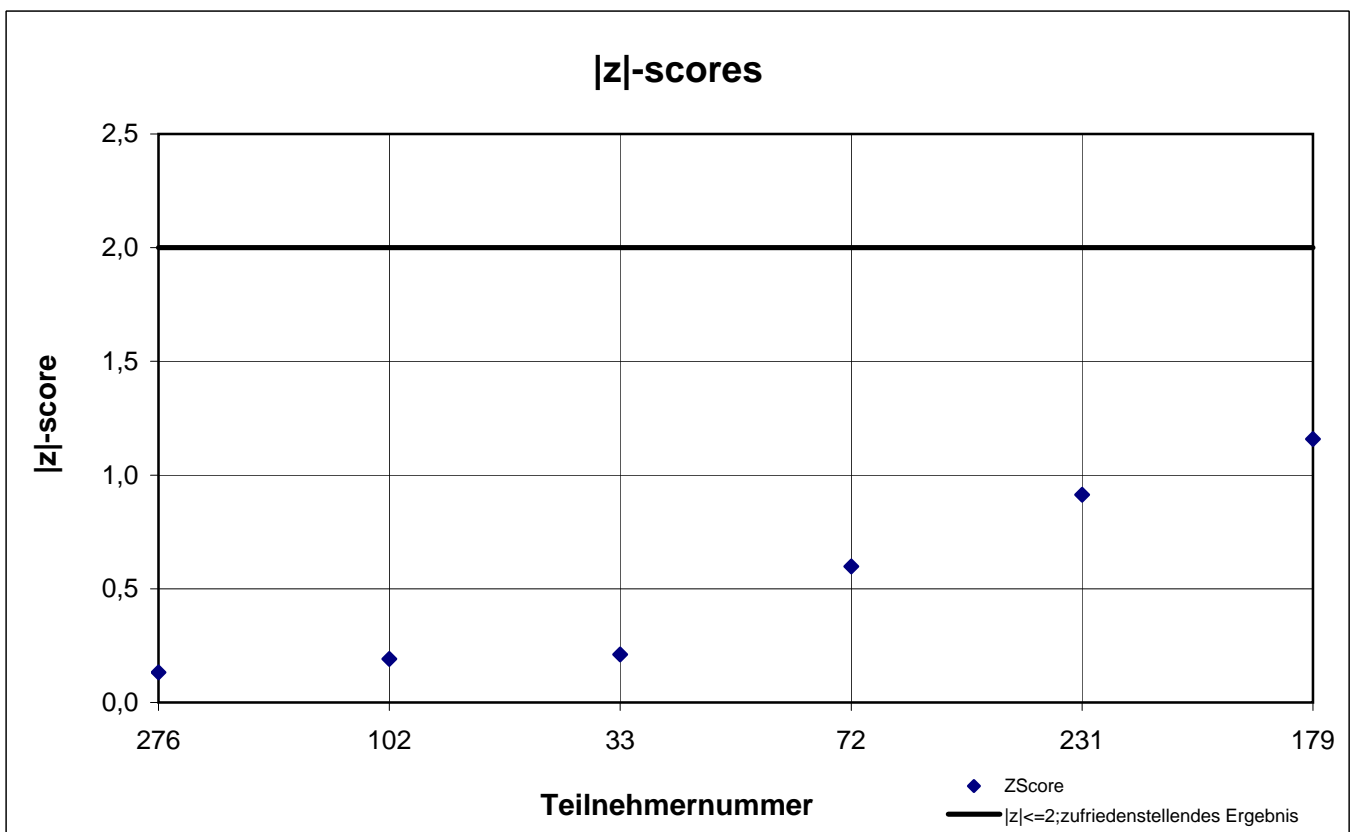
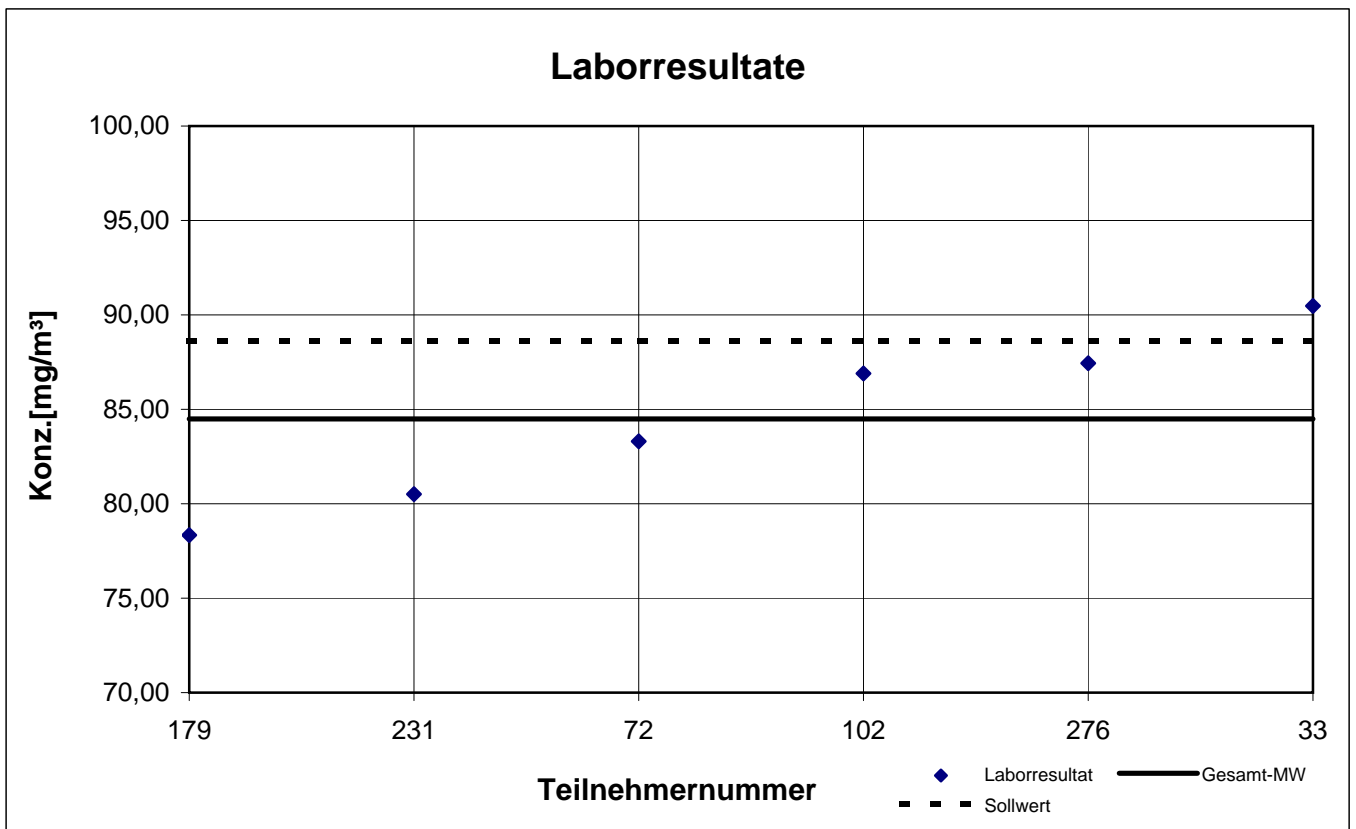
Probe 3

1-Methoxy-2-propanol



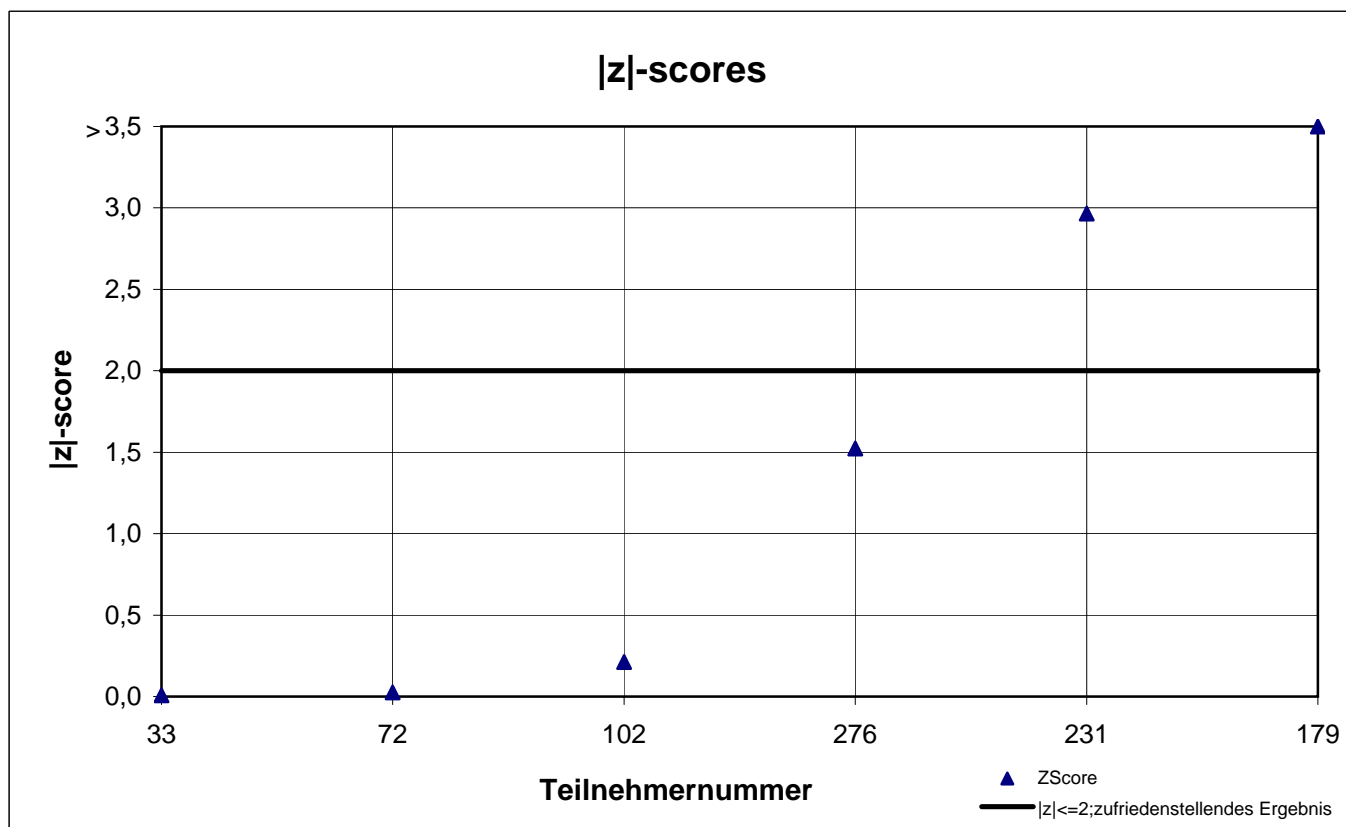
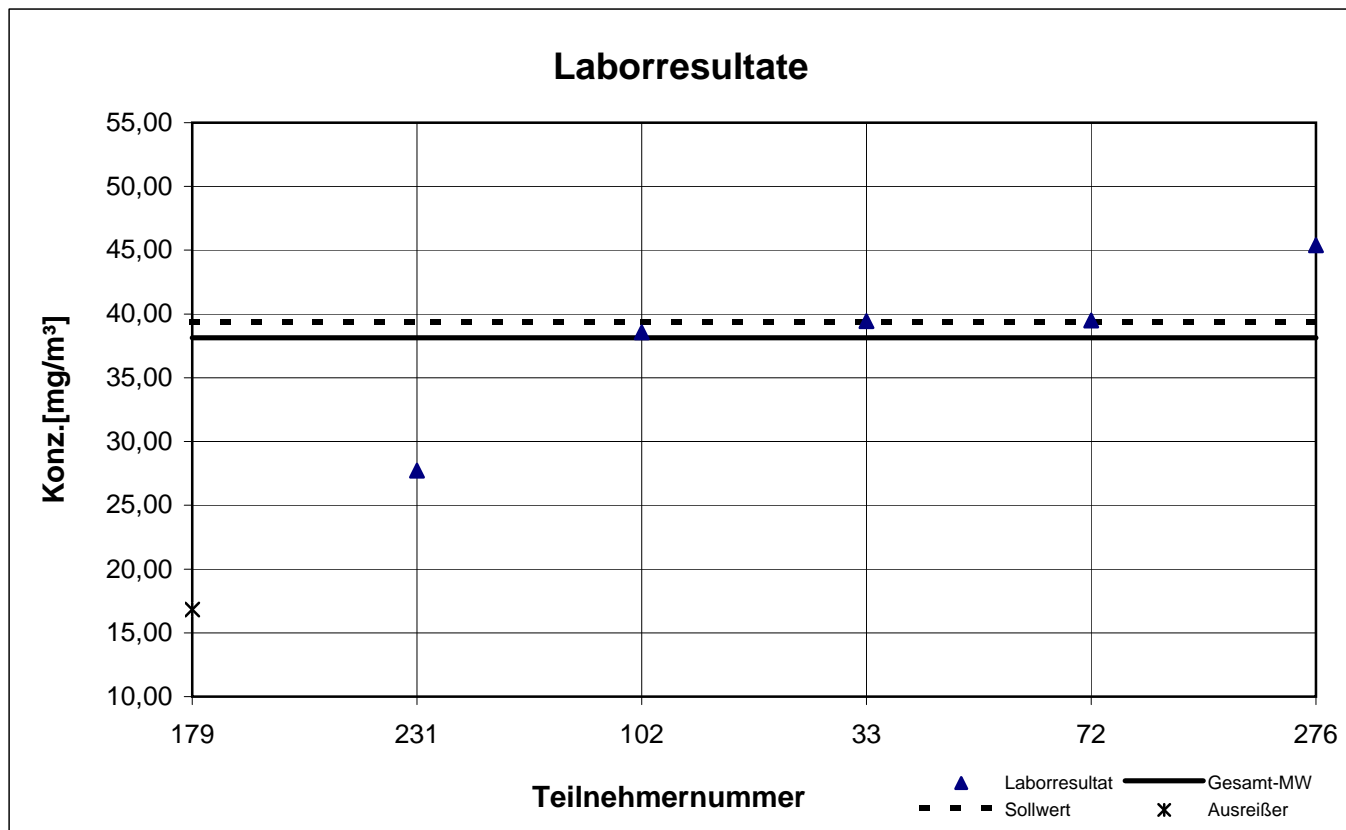
Probe 3

2-Butanol



Probe 3

2-Butoxyethanol



Probe 3

i-Butanol

